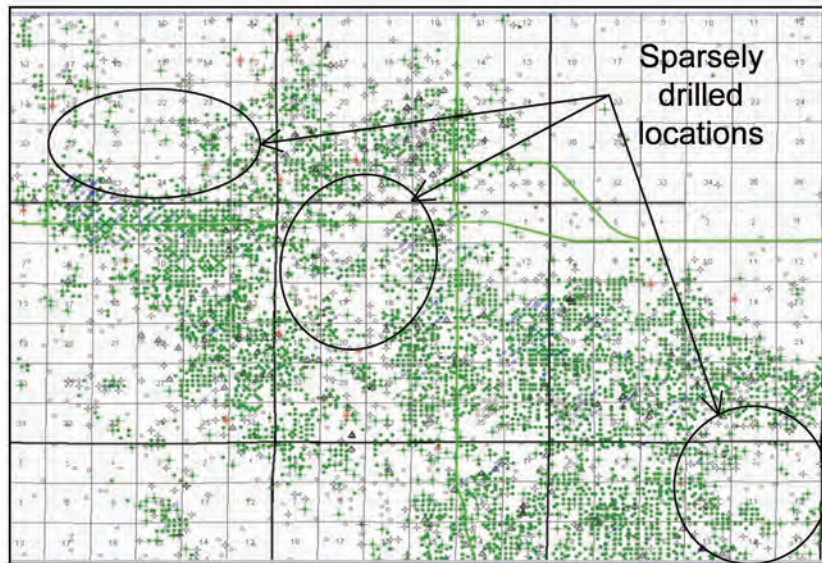
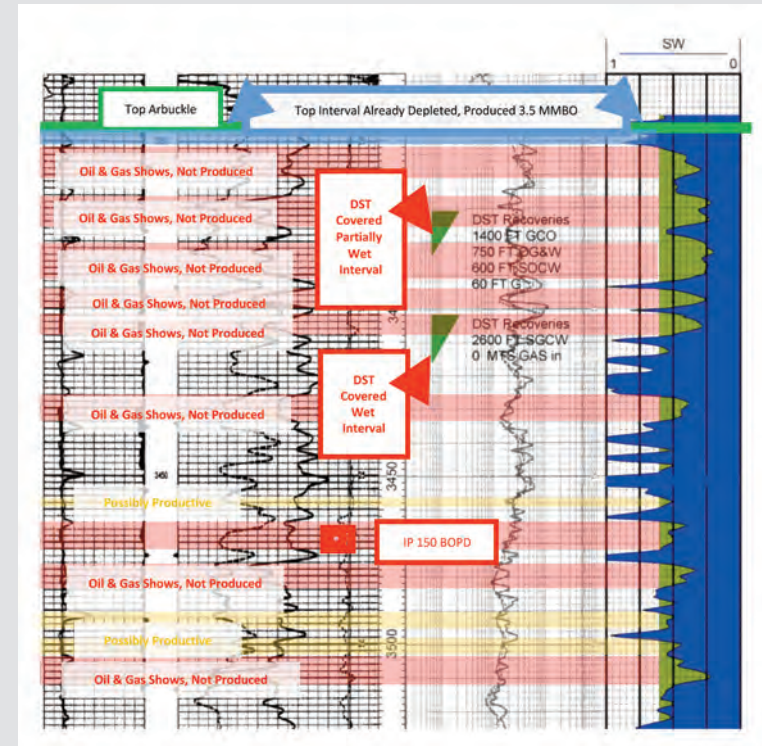


Central Kansas Uplift: New discoveries based on historic data and advanced technology

Poor quality logs, limited understanding of reservoir structure and a lack of attention to detail during the boom years of these fields meant that many productive intervals and entire locations were never produced.



Map of a large mature oil field, in which dozens of potentially productive locations have not been drilled to date.



A 2002 well log showing as many as 10 productive zones that were overlooked originally.